

# CONTACT

## How to reach us.

Höckh Metall-Reinigungsanlagen GmbH

Untere Reute 58-66

D-75305 Neuenbürg

Tel: +49 7082 - 410 931-10

Fax: +49 7082 - 410 931-50

Mail: [sales@hoeckh.com](mailto:sales@hoeckh.com)

Web: [www.hoeckh.com](http://www.hoeckh.com)

Here you can find your sales contact:

[www.hoeckh.com](http://www.hoeckh.com)



Visit us also on Facebook and Xing.

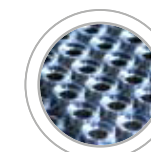


# Höckh

Parts Cleaning Technology



Degreasing



Precision  
cleaning



Preserving



### Efficient:

High part throughput and perfect quality.



### Environmentally friendly:

Full vacuum for secure solvent treatment.



### Interconnectivity:

Prepared for Industry 4.0.



### Profitable:

Low energy consumption and long solvent service lives.



### Universal:

Suitable for all common solvents.

# CLEANING WITH SOLVENTS

### Solvent systems with full vacuum:

Ideal for turned, pressed or formed parts with heavy coatings of oil or grease.



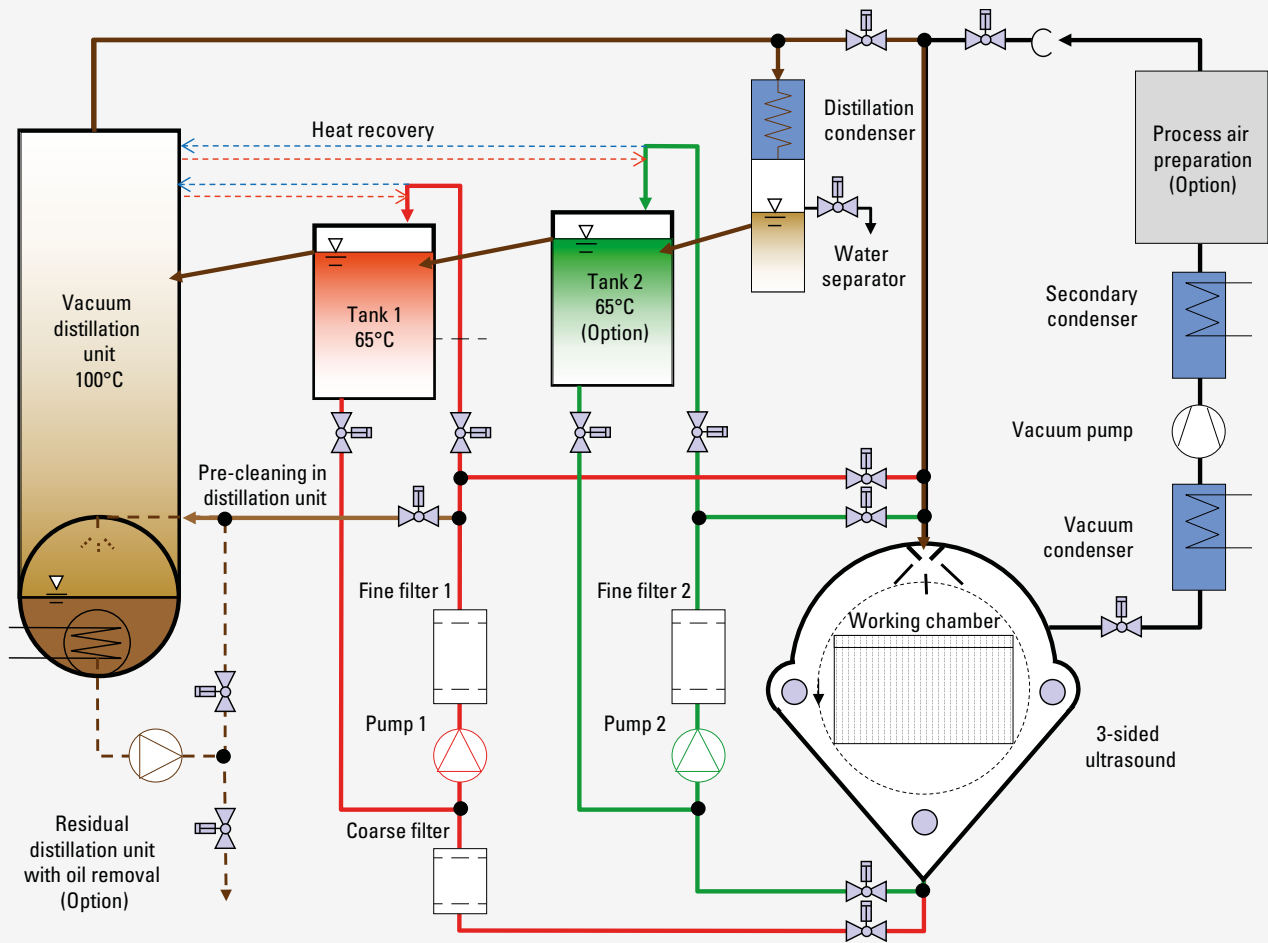
[www.hoeckh.com](http://www.hoeckh.com)

# STANDARD or INDIVIDUAL?

Our solvent systems offer the highest performance for cleaning turned and milled parts, pressed, bent, fine-blanked and formed parts made of all materials and covered with oil or grease. Three integrally scalable system series are available – customised to your particular application.

The end-to-end systems offer extremely low emissions and high profitability and are suitable for the use of hydrocarbons, modified alcohols or perchlorethyls as a result of their solvent recovery and preparation. This results in very long service lives. Users do not come into contact with the solvents under full-vacuum conditions. Results can be reproduced thanks to the fully automated process work flow and batch documentation.

# MULTICLEAN-S process



- 1. Pre-cleaning using spray method, 2. Cleaning using ultrasound and I or pressure flooding, 3. Steam de-greasing with ultra-clean solvent steam, 4. Preserving, 5. Drying.

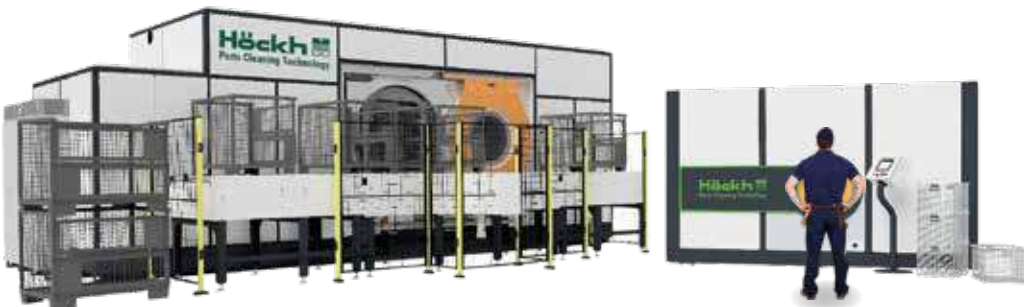
# STANDARD / LC-III

- Particularly compact system design: just 3m2 of space required.
- For fast intermediate cleaning (degreasing/chip removal) or for high demanding final cleaning with ultrasonic's.
- Loading manually or with full automation.



# PRO

- Can be individually configured.
- For high throughputs.
- Connection to the clean-room system possible.
- For baskets of loose goods, palettes or cage boxes.



# MAX

- Customer-specific large-scale solution.
- For practically all applications.
- For large parts or pipes or heat treatment processes.



# Typical sizes

	STANDARD / LC-III	S-1 PRO	S-2 PRO	S-3 PRO	S-4 PRO	MAX
Size in use	530x320x200 mm 480x320x300 mm	530x320x200 mm 600x400x300 mm	670x480x300 mm 670x480x400 mm	800x600x400 mm 1340x480x400 mm	EPAL box pallet	customer specific
Weight	max. 60 kg	max. 80 kg	max. 200 kg	max. 500 kg	max. 1300 kg	max. 6000 kg
Throughput	4-8 batches/hr	6-14 batches/hr	6-10 batches/hr	6-10 batches/hr	3-5 batches/hr	as required